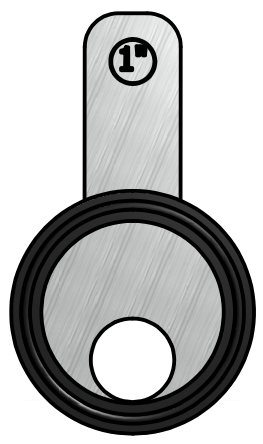
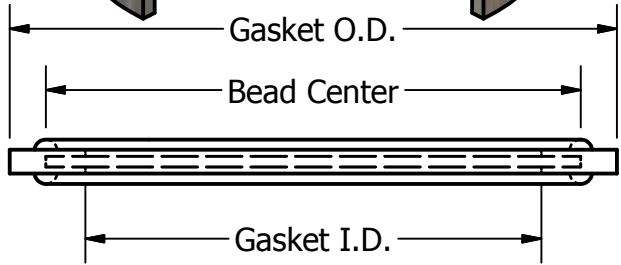
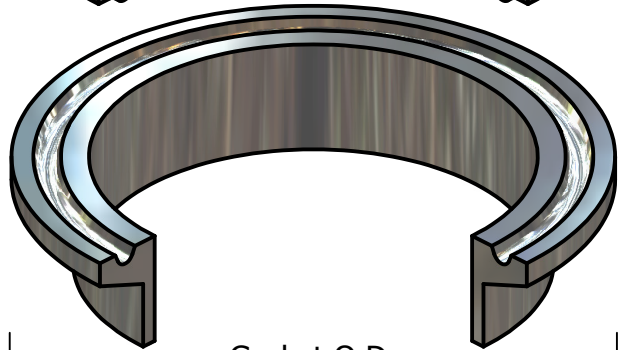
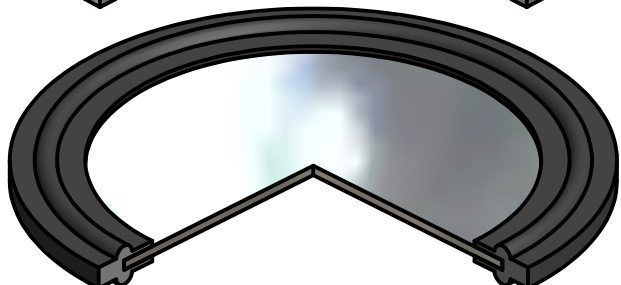
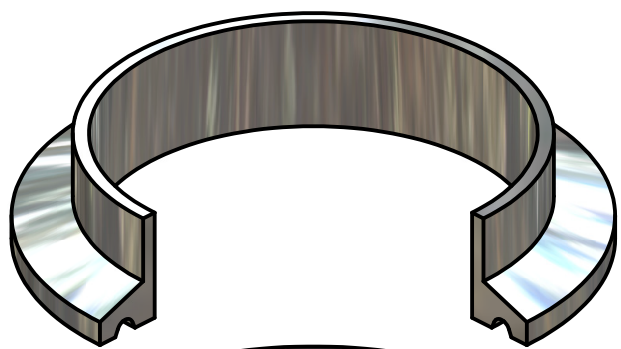


2

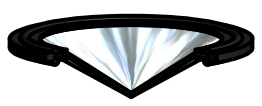
1

B

B



Tabbed Style



Vertical Plate

PLATE MATERIAL IS 316L STAINLESS STEEL

SEE RF-110 LITERATURE FOR MORE INFORMATION

SEE 42MP DRAWING FOR FRACTIONAL SIZES

Available Sizes - (More available on request)

Part #	Gasket O.D.	Gasket I.D.	Bead Center
A80MP_-100	1.984	.900	1.718
A80MP_-150	1.984	1.400	1.718
A80MP_-200	2.515	1.900	2.218
A80MP_-250	3.050	2.400	2.781
A80MP_-300	3.579	2.900	3.281
A80MP_-400	4.682	3.869	4.344
A80MP_-600	6.507	5.817	6.156

- * Available in concentric and eccentric bore
- * Vertical Plate angle is approximately 25°

Rubber Fab

a Garlock Hygienic Technologies company

26 Brookfield Drive • Sparta NJ 07871

973.579.2959 • 888.442.2959

www.rubberfab.com • sales@rubberfab.com

TITLE

A80MP

2

1

A

A