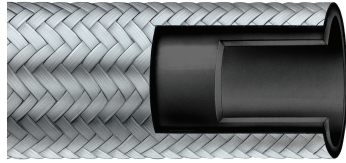


Rubber Fab

a Garlock Hygienic Technologies company

RFSTB



Smoothbore Black Conductive PTFE Lined Hose with Braided Stainless Steel Cover

TUBE: Black conductive PTFE

COVER: Braided stainless steel

TEMPERATURE: -20°F to 350°F

Part Number	Hose ID Inch	Hose OD Inch	Bend Radius Inch	Max. Working Pressure @ 70°F psig	Vacuum Rating @ 70°F in. Hg.	Weight Per Foot
04RFSTB	0.25	0.37	3.00	3000	FULL	0.08
06RFSTB	0.38	0.51	5.00	2000	FULL	0.11
08RFSTB	0.50	0.63	6.50	1425	FULL	0.16
12RFSTB	0.75	0.88	8.20	1000	FULL	0.20
16RFSTB	1.00	1.19	12.00	1000	FULL	0.50
24RFSTB	1.50	1.76	20.00	900	FULL	0.92

Features

- Conductive liner dissipates static electricity
- Outer cover is stainless steel braid overwrap
- Smoothbore PTFE inner core
- Non-stick contact surface will not contaminate product
- Withstands high velocity and pressure surges
- Resists moisture
- Autoclavable

Applications

- Food processing
- Pharmaceutical processing
- Cosmetics
- Hot CIP solutions
- Chemical products
- Low pressure steam

Hose Certifications

- FDA 21 CFR 177.1550
- USDA
- USP Class VI

26 Brookfield Drive • Sparta, New Jersey 07871

973.579.2959 • 866-442-2959 Toll Free • 973.579.7275 Fax • www.rubberfab.com